

SHIVAANALYTICALS

PLOT NO: 24D(P) & 34D, KIADB Industrial Area,
Hoskote, Karnataka 562114, India

CERTIFICADO DE ANALISIS N PHC 6931020

PRIMABOLAN

Submitted by: Koshier Pharma Applicant: Anjel Sample identification: METHENOLONE ENANTHATE Sample Quantity: 10 Sample Description: 1 Analytical Methodology: Submitted by xx y Technical Procedure PHC-PT-036 v1,PH-PT-37 V1	Analysis Start Date Analysis Start Date: 22/08/2018
---	---

REHEARSAL	SPECIFICATIONS	RESULTS
Valoración Método HPLC	Methenolone Enanthate 100mg/ml Positive for HPLC	Cumplies specification (96,01% / ml Declared Value) Cumplies - Yes Cumplies - Conform

Reviewed by 	Approved by 
--	--

End of Report
The results obtained only affect the samples received and analyzed.

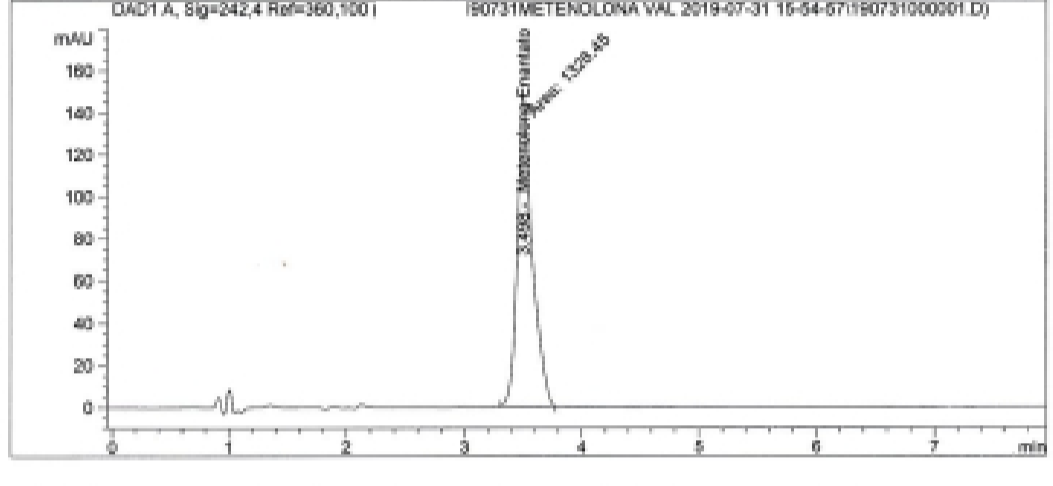
The test uniform must not be reproduced, except in its entirety, without the written approval of the Laboratory with a NP Standard. ISO/IEC/ 17025:2006 point 5.10.2 Note 74
 PHC-FOR-013

WWW.SHIVAANALYTICALS.COM

Data File D:\DATA_HPLC_FLD\ (190731METHENOLONA VAL 2019-07-31 15-54-57\190731000001.D)
 Sample Name: STD 1

```

=====
Acq. Operator   : OLGA                               Seq. Line : 1
Acq. Instrument : HPLC1100                           Location  : Vial 1
Injection Date  : 7/31/2019 3:55:52 PM                 Inj       : 1
                                                    Inj Volume: 10 µl
Acq. Method    : D:\Data_HPLC_FLD\ (190731METHENOLONA VAL 2019-07-31 15-54-57\
                METENOLONA ENANT.M
Last changed   : 7/31/2019 3:54:55 PM by OLGA
Analysis Method : D:\DATA_HPLC_FLD\ (190731METHENOLONA VAL 2019-07-31 15-54-57\
                METENOLONA ENANT.M
Last changed   : 8/1/2019 8:29:56 AM by OLGA
                (Results are from a previously saved Batch)
Sample Info    : METENOLONA 100 mg/mL Solucion Inyectable
                Lote: T47297 Vto.:01-2021 A.:2910519
                Valoracion de METENOLONA ENANTATO STD 1
    
```



 Area Percent Report with Performance

```

Calib. Data Modified : 8/1/2019 7:53:31 AM
Multiplier           : 1.0000
Dilution             : 1.0000
Use Multiplier & Dilution Factor with ISTDs

Signal 1: DAD1 A, Sig=242,4 Ref=360,100

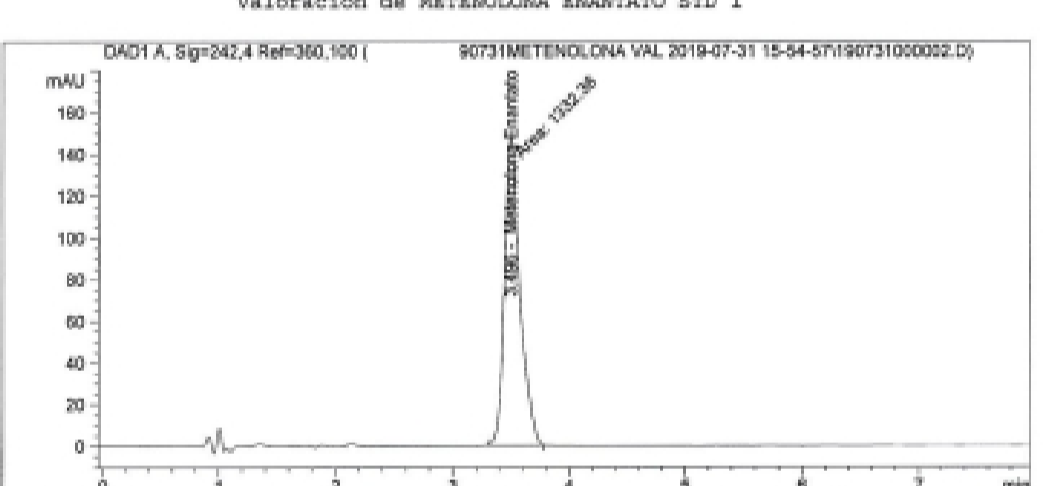
RetTime  k'      Area      Height  Symm.  Width  Plates  Resol  Select
[ min]   [      ] [mAU*s]  [mAU]   [      ] [min]   [      ] [      ] [      ]
-----|-----|-----|-----|-----|-----|-----|-----|-----|
3.498   -    1328.44580  147.69777  0.66  0.1267  4224   -     -
    
```

*** End of Report ***

Data File D:\DATA_HPLC_FLD\ (190731METHENOLONA VAL 2019-07-31 15-54-57\190731000002.D)
 Sample Name: STD 1

```

=====
Acq. Operator   : OLGA                               Seq. Line : 1
Acq. Instrument : HPLC1100                           Location  : Vial 1
Injection Date  : 7/31/2019 4:05:29 PM                 Inj       : 2
                                                    Inj Volume: 10 µl
Acq. Method    : D:\Data_HPLC_FLD\ (190731METHENOLONA VAL 2019-07-31 15-54-57\
                METENOLONA ENANT.M
Last changed   : 7/31/2019 3:54:55 PM by OLGA
Analysis Method : D:\DATA_HPLC_FLD\ (190731METHENOLONA VAL 2019-07-31 15-54-57\
                METENOLONA ENANT.M
Last changed   : 8/1/2019 8:40:32 AM by OLGA
                (modified after loading) (Results are from a previously saved Batch)
Sample Info    : METENOLONA 100 mg/mL Solucion Inyectable
                Lote: T47297 Vto.:01-2021 A.:2910519
                Valoracion de METENOLONA ENANTATO STD 1
    
```



 Area Percent Report

```

Sorted By      : Signal
Calib. Data Modified : 8/1/2019 7:53:31 AM
Multiplier     : 1.0000
Dilution       : 1.0000
Use Multiplier & Dilution Factor with ISTDs

Signal 1: DAD1 A, Sig=242,4 Ref=360,100

Peak RetTime Type  Width  Area      Area  Name
# [min]   [min] [mAU*s]  %
-----|-----|-----|-----|-----|-----|
1  3.496 MM    0.1503 1332.35889 100.0000 Metenolona Enantato

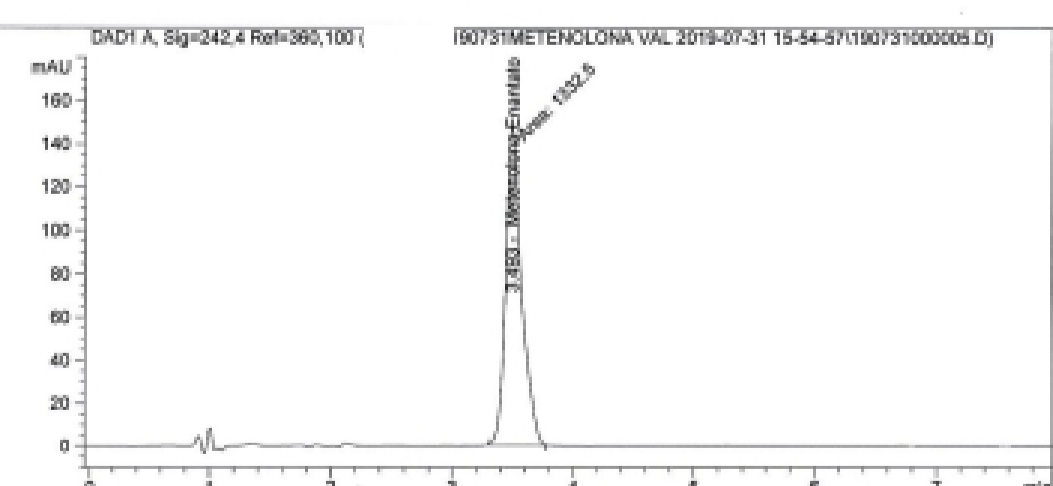
Totals : 1332.35889
    
```

*** End of Report ***

Data File D:\DATA_HPLC_FLD\ (190731METHENOLONA VAL 2019-07-31 15-54-57\190731000005.D)
 Sample Name: STD 1

```

=====
Acq. Operator   : OLGA                               Seq. Line : 1
Acq. Instrument : HPLC1100                           Location  : Vial 1
Injection Date  : 7/31/2019 4:34:21 PM                 Inj       : 5
                                                    Inj Volume: 10 µl
Acq. Method    : D:\Data_HPLC_FLD\ (190731METHENOLONA VAL 2019-07-31 15-54-57\
                METENOLONA ENANT.M
Last changed   : 7/31/2019 3:54:55 PM by OLGA
Analysis Method : D:\DATA_HPLC_FLD\ (190731METHENOLONA VAL 2019-07-31 15-54-57\
                METENOLONA ENANT.M
Last changed   : 8/1/2019 8:40:32 AM by OLGA
                (modified after loading) (Results are from a previously saved Batch)
Sample Info    : METENOLONA 100 mg/mL Solucion Inyectable
                Lote: T47297 Vto.:01-2021 A.:2910519
                Valoracion de METENOLONA ENANTATO STD 1
    
```



 Area Percent Report

```

Sorted By      : Signal
Calib. Data Modified : 8/1/2019 7:53:31 AM
Multiplier     : 1.0000
Dilution       : 1.0000
Use Multiplier & Dilution Factor with ISTDs

Signal 1: DAD1 A, Sig=242,4 Ref=360,100

Peak RetTime Type  Width  Area      Area  Name
# [min]   [min] [mAU*s]  %
-----|-----|-----|-----|-----|-----|
1  3.493 MM    0.1503 1332.49561 100.0000 Metenolona Enantato

Totals : 1332.49561
    
```

*** End of Report ***